

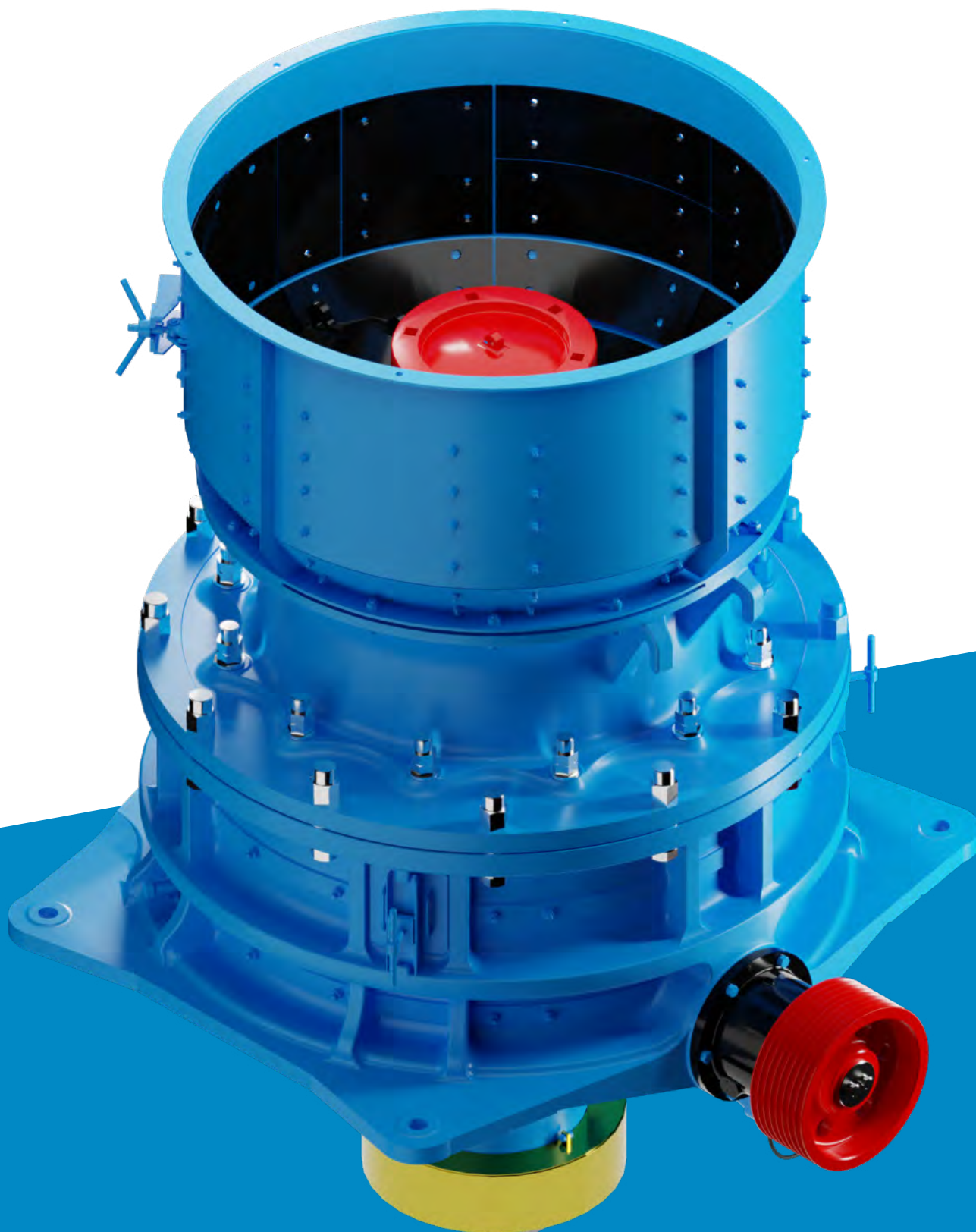
# KAWASAKI CYBAS-I CONE CRUSHER

## ILLUSTRATED PARTS CATALOGUE

---

**IMSM**

ENGINEERING



# CONTENTS

---

<b>1. General</b>	<b>3</b>
<b>1.1</b> Ordering Information	3
<b>1.2</b> Safety	4
<b>1.3</b> Part Identification	4
<b>1.4</b> Manual Setup	4
<b>2. Revision and Approval</b>	<b>5</b>
<b>2.1</b> Notes	6
<b>3. Primary Components of Crushing System</b>	<b>11</b>
<b>3.1</b> Primary Components of Crusher	13
<b>3.1.1</b> Bottom Frame 1-4 (Liners)	15
<b>3.1.2</b> Bottom Frame 2-4 (Dust Collar)	17
<b>3.1.3</b> Bottom Frame 3-4 (Eccentric Sleeve)	19
<b>3.1.4</b> Bottom Frame 4-4 (Piping and Doors)	21
<b>3.1.5</b> Hydraulic Cylinder 1-3 (Cylinder)	23
<b>3.1.6</b> Hydraulic Cylinder 2-3 (Ram)	25
<b>3.1.7</b> Hydraulic Cylinder 3-3 (GY Fittings)	27
<b>3.1.8</b> Top Frame 1-2 (Bearing and Liners)	29
<b>3.1.9</b> Top Frame 2-2 (Piping)	31
<b>3.1.10</b> Main Shaft	33
<b>3.1.11</b> Horizontal Shaft 1-2 (Shaft)	35
<b>3.1.12</b> Horizontal Shaft 2-2 (Lubrication)	37
<b>3.1.13</b> Hopper	39
<b>3.2</b> Hydraulic System and Accumulator	41
<b>3.3</b> Lubrication & Hydraulic Arrangement	48
<b>3.3.1</b> Lube Cabinet	45
<b>3.3.2</b> Hydraulic Pump	47
<b>3.3.3</b> Lube Pump	49
<b>3.4</b> Air Blower	51
<b>4. Special Tools</b>	<b>52</b>

# GENERAL

---

## 1. General:

This manual is for use by everyone involved in the use and maintenance of the KAWASAKI Cybas Cone crushers. Every effort has been made to ensure that the information contained herein is accurate and up to date. With the continuous striving for the improvement of our machines, small discrepancies with the accuracy of the illustrations may be present.

### 1.1. Ordering Information

For the accuracy of the information in some instances, all the parts of a sub-assembly will be listed but can only be ordered as part of a set. This information will be included on the relevant pages.

Orders for parts not listed in this manual may be placed with IMS Engineering. In these cases, special circumstances will apply with regards lead times and assembly procedures that would have to be adhered to on site.

When ordering parts, the part number, part description and site of operation must be clearly stated. The more information supplied with your order the better the chances of getting the delivery correct.

Orders shall be placed at the following:

**IMS Engineering (Pty.) Ltd.**  
**Spartan Service Centre**

**PO Box 8003**  
**Edleen**  
**1625**  
**South Africa**

**10 Derrick Road**  
**Spartan**  
**Kempton Park**  
**South Africa**

**Tel: +27 (0) 10 001 8200      Fax: +27 11 970 3201**

**Web: [www.imsengineering.co.za](http://www.imsengineering.co.za)**

**Email: [imse@imgroup.co.za](mailto:imse@imgroup.co.za)**

## 1.2. Safety

In most cases the parts are heavy and cumbersome and are supplied with eye bolts or lifting lugs. The utmost caution should be exercised at all times when handling these components.

The parts shall be stored in such a way so as to prevent damage from the weather, falling, bumping etc.

For the safe operation of the machine, genuine parts, supplied by IMS Engineering, should be used at all times

Refer to the workshop repair manual for the correct procedures when installing new parts.

## 1.3. Part Identification

New parts shall be clearly marked at all times and should be checked for correctness against the worn or damaged part before installation.

Preventative measures should be taken to avoid fading of labels and markings due to the elements.



**CAUTION:  
IF IN DOUBT, CONTACT  
IMS ENGINEERING  
FOR ASSISTANCE**

## 1.4. MANUAL SETUP.

The item numbers depicted in the parts lists are only for identification of the part in the illustration. When the item number is followed by a point and a number, the component will be included when ordering the next level up. E.g. 3.1 will be included when ordering item 3 but may be ordered separately. Where no number appears in the item column, the set will have to be ordered.

## 2. REVISIONS AND APPROVAL

### REVISION STATUS

REVISION	DATE	DESCRIPTION
0		1 <sup>st</sup> ISSUE

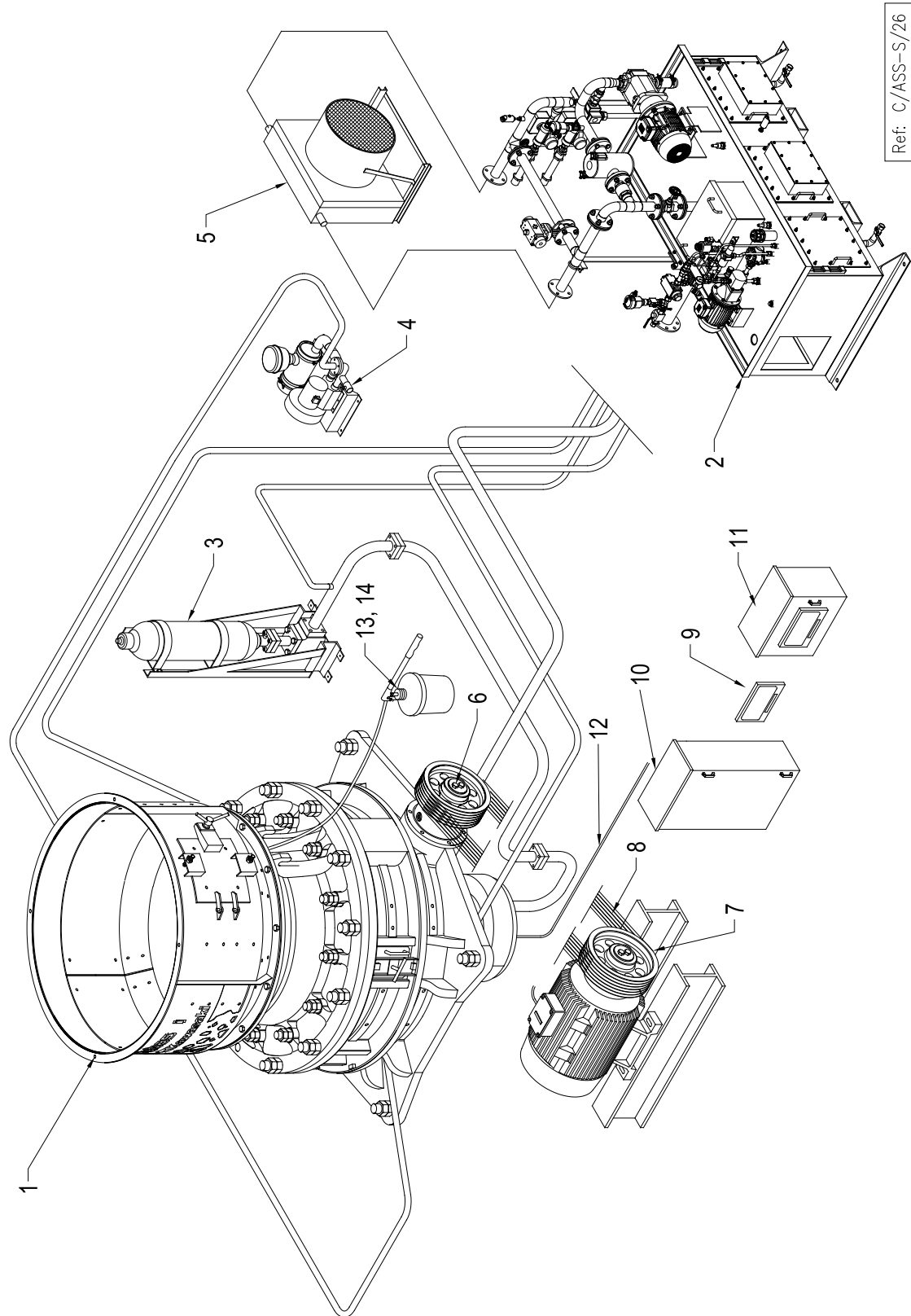
### APPROVAL STATUS

REVISION	ISSUED BY	APPROVED BY		
		Documentation	Engineering	Product Support
0	ENGINEERING			





# PRIMARY COMPONENTS OF CRUSHING SYSTEM



Ref: C/ASS-S/26

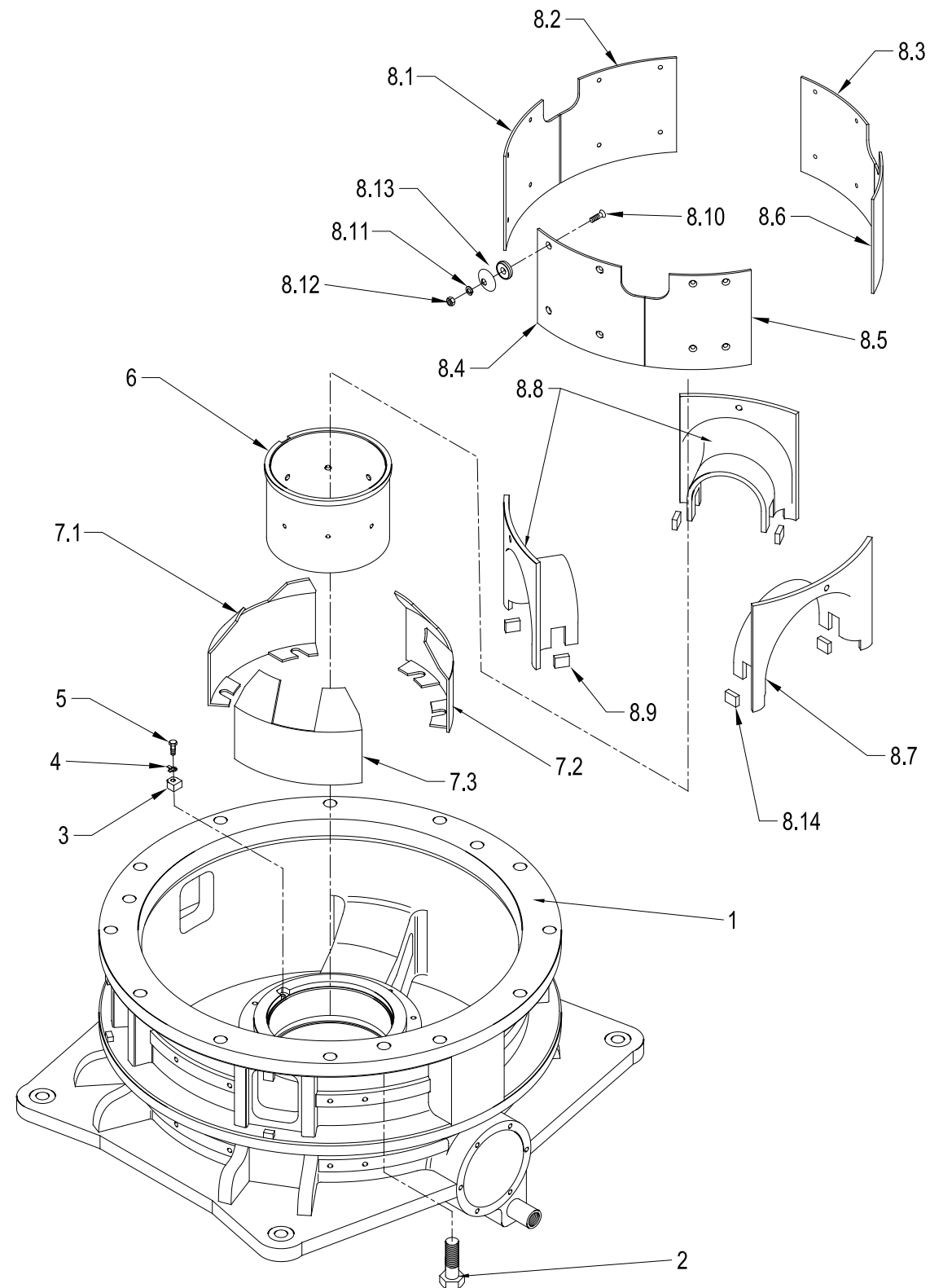
# PRIMARY COMPONENTS OF CRUSHING SYSTEM

## 3. PRIMARY COMPONENTS OF CRUSHING SYSTEM

ITEM No	PART DESCRIPTION	PART No	QTY	NOTE
1	1200Z-i CRUSHING SYSTEM	Z15-00000-CRU-01	1	
2	LUBE SYSTEM		1	
3	ACCUMULATOR ASSEMBLY	Z15-00477-000-00	1	
4	AIR DUST BLOWER ASSY	Z02-00054-000-00	1	
5	COOLER ASSEMBLY	Z15-00900-000-00	1	
5.1	DYNACOOOL DC33VH8NM600	Z15-00900-000-01	1	
5.2	2.2KW 6P 525V 112	Z01-00183-000-01	1	
5.3	HEX HD BOLT,DIN933,M10x40-8,8	A00-09186-009-01	4	
5.4	HEX NUT,DIN934,M10-8	A00-06926-009-01	4	
5.5	SPRING WASHER,A10,DIN127	Y02-00184-009-01	4	
6	PULLEY CRUSHER SIDE	Z15-00801-000-00	1	
6.1	PULLEY 630MM X 8 SPC	A00-04076-PLB-01	1	
6.2	TAPER-LOCK BUSH 5050X100MM	A00-04074-PLB-01	1	
7	PULLEY MOTOR SIDE PLANT 1	Z15-00803-000-00	1	
7.1	PULLEY 450MM X 8 SPC	A00-08931-PLB-01	1	
7.2	TAPERLOCK BUSH 5050X90mm	Z01-00401-000-01	1	
8	WEDGE BELT 22N (SPC) 5000MM	A00-08630-PLB-01	8	
9	HMI TOUCH PANEL		2	
10	INTERFACE PANEL	Z15-00011-INS-00	1	
11	APC PANEL- CRUSHER	Z01-01021-000-00	1	
12	CABLE,GY,TEMPSONIC 30m, C/W CO	Z02-00866-000-01	1	
13	GREASER, FIELD ASSY 15kg	Z02-00680-LUB-00	1	
14	FIELD GREASER 15kg x300mm TIN		1	



# PRIMARY COMPONENTS OF CRUSHING SYSTEM



Ref: C/BFM-1/18

# PRIMARY COMPONENTS OF CRUSHING SYSTEM

## 3.1.1 BOTTOM FRAME 1-4\_(LINERS)

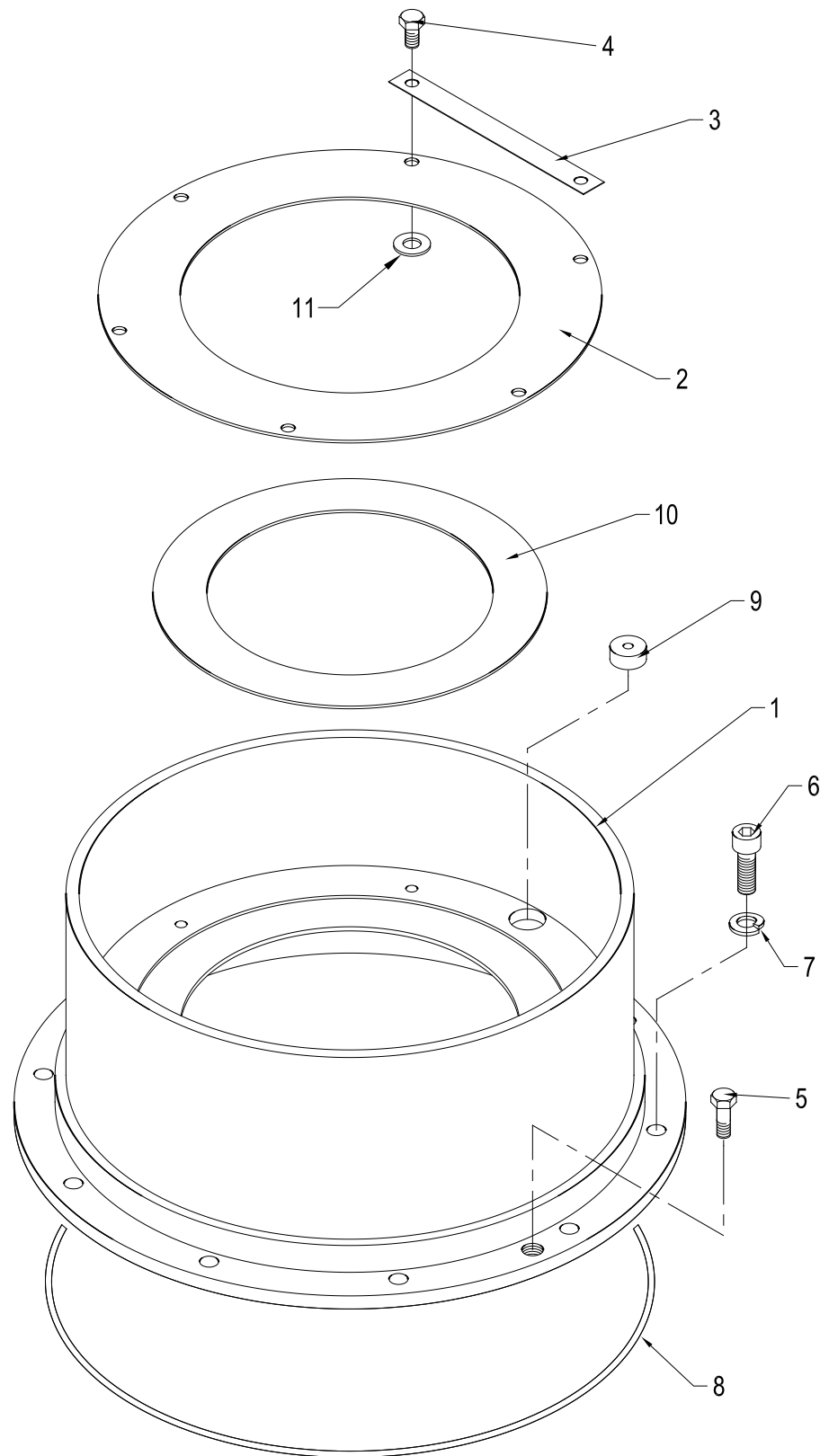
ITEM No	PART DESCRIPTION	PART No	QTY	NOTE
1	BOTTOM FRAME 1200Z-i	Z15-00601-FRM-01	1	
2	HEX HD BLT DIN561 M42x110-8.8	Z05-00030-009-01	3	
3	KEY, OUTER BUSH	Z05-00072-009-01	1	
4	TAB WASH,DOUBLE, M16, DIN463	Z04-00118-BUS-03	1	
5	HEX HD SCREW,DIN933,M16x45-8,8	A00-06154-009-01	1	
6	OUTER BUSH 1200Z	Z05-00071-BUS-01	1	
7	GEARBOX LINER ASSY	Z15-00023-004-00	1	
7.1	LINER 1	Z15-00624-LIN-01	1	
7.2	LINER 2	Z15-00625-LIN-01	1	
7.3	LINER 3	Z15-00626-000-01	1	
8	BOTTOM FRAME LINER ASSEMBLY	Z15-00616-004-00	1	
8.1	LINER 1	Z05-00077-LIN-01	1	
8.2	LINER 2	Z05-00077-LIN-02	1	
8.3	LINER 3	Z05-00077-LIN-03	1	
8.4	LINER 4	Z05-00077-LIN-04	1	
8.5	LINER 5	Z05-00077-LIN-05	1	
8.6	LINER 6	Z05-00077-LIN-06	1	
8.7	HORIZONTAL SHAFT ARM LINER	Z15-00603-LIN-01	1	
8.8	BOTTOM FRAME ARM LINERS	Z15-00606-LIN-01	2	
8.9	WELD PIECE PLT 65x38x16THK	Z15-00607-000-01	4	
8.10	CSK NIP BLT,DIN604,M16x100-8.8	L00-00004-009-01	24	
8.11	SPRING WASHER,A16,DIN127	G04-00158-000-04	24	
8.12	HEX NUT, DIN934, M16-8	Z01-00019-009-01	24	
8.13	45/M16 CAP WASHER +RUBBER SEAL	Z02-00039-009-01	24	
8.14	WELD PIECE PLT 65x30x16THK	Z15-00608-000-01	2	

### NOTE

To mount items 8.1, 8.2, 8.3, 8.4, 8.5 and 8.6, four each of items 8.10, 8.11, 8.12, and 8.13 will be needed per liner.



# PRIMARY COMPONENTS OF CRUSHING SYSTEM



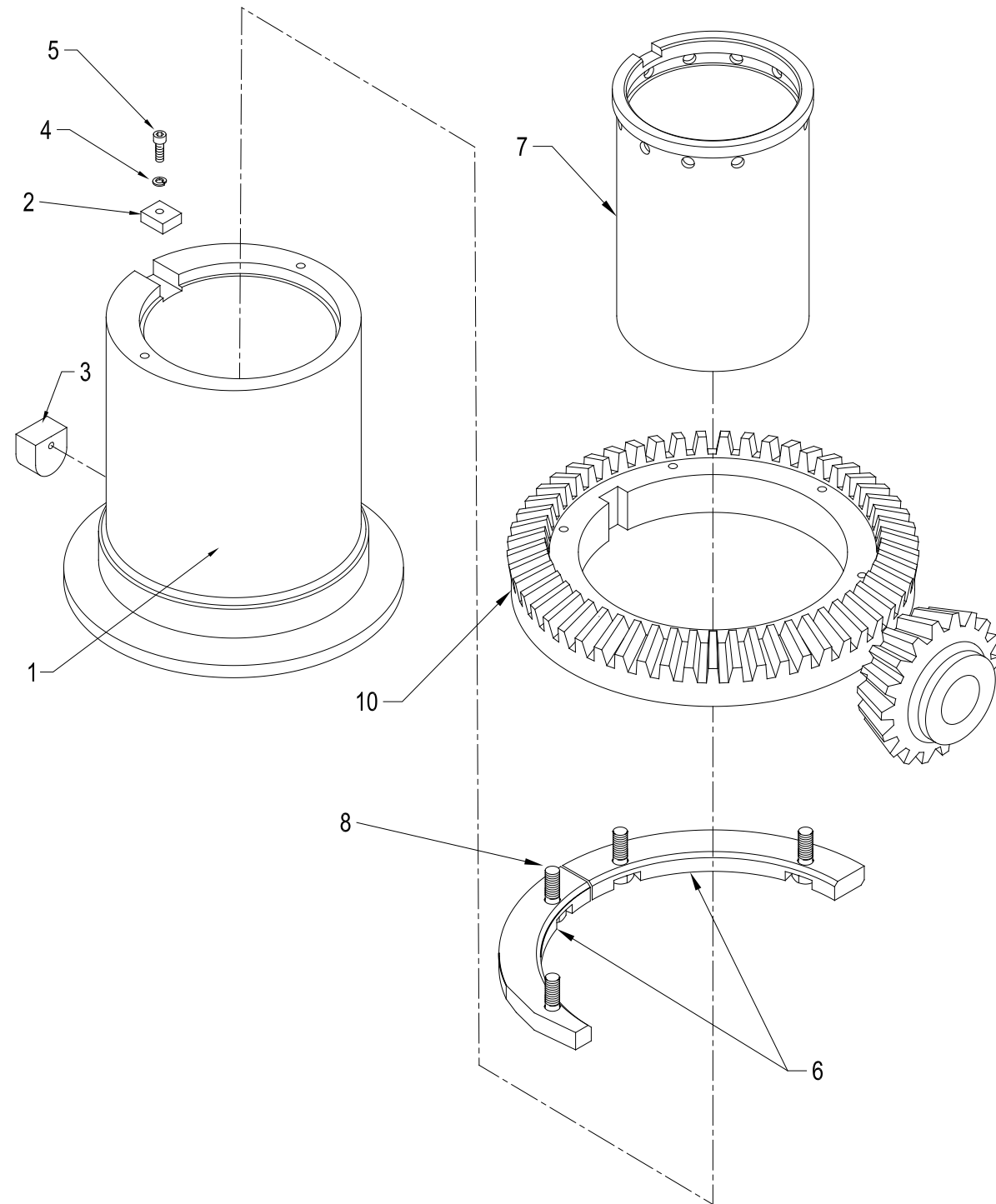
Ref: C/BFM-2/11

# PRIMARY COMPONENTS OF CRUSHING SYSTEM

## 3.1.2 BOTTOM FRAME 2-4\_(DUST COLLAR)

ITEM No	PART DESCRIPTION	PART No	QTY	NOTE
1	DUST COLLAR	Z15-00614-000-01	1	
2	COVER	Z15-00610-000-01	1	
3	SPECIAL WASHER	Z15-00611-000-01	3	
4	HEX HD SCREW,DIN933,M16x45-8,8	A00-06154-009-01	6	
5				
6	CK CP SRW,DIN7991,M20x45-10,9	L00-00038-009-01	10	
7	SPRING WASHER,A20,DIN127	Z01-00011-009-01	10	
8	O-ring 5.7xID604 NBR	L00-00036-SEL-01	1	
9	RUBBER CAP	Z15-00612-000-01	1	
10	SPLASH RING, DUST COLLAR	Z05-00085-000-01	1	
11	FLAT WASHER,A17,DIN 125.	Y03-00178-009-22	6	
1	DUST COLLAR	Z15-00614-000-01	1	
2	COVER	Z15-00610-000-01	1	
3	SPECIAL WASHER	Z15-00611-000-01	3	
4	HEX HD SCREW,DIN933,M16x45-8,8	A00-06154-009-01	6	
6	CK CP SRW,DIN7991,M20x45-10,9	L00-00038-009-01	10	
7	SPRING WASHER,A20,DIN127	Z01-00011-009-01	10	
8	O-ring 5.7xID604 NBR	L00-00036-SEL-01	1	
9	RUBBER CAP	Z15-00612-000-01	1	
10	SPLASH RING, DUST COLLAR	Z05-00085-000-01	1	
11	FLAT WASHER,A17,DIN 125.	Y03-00178-009-22	6	

# PRIMARY COMPONENTS OF CRUSHING SYSTEM



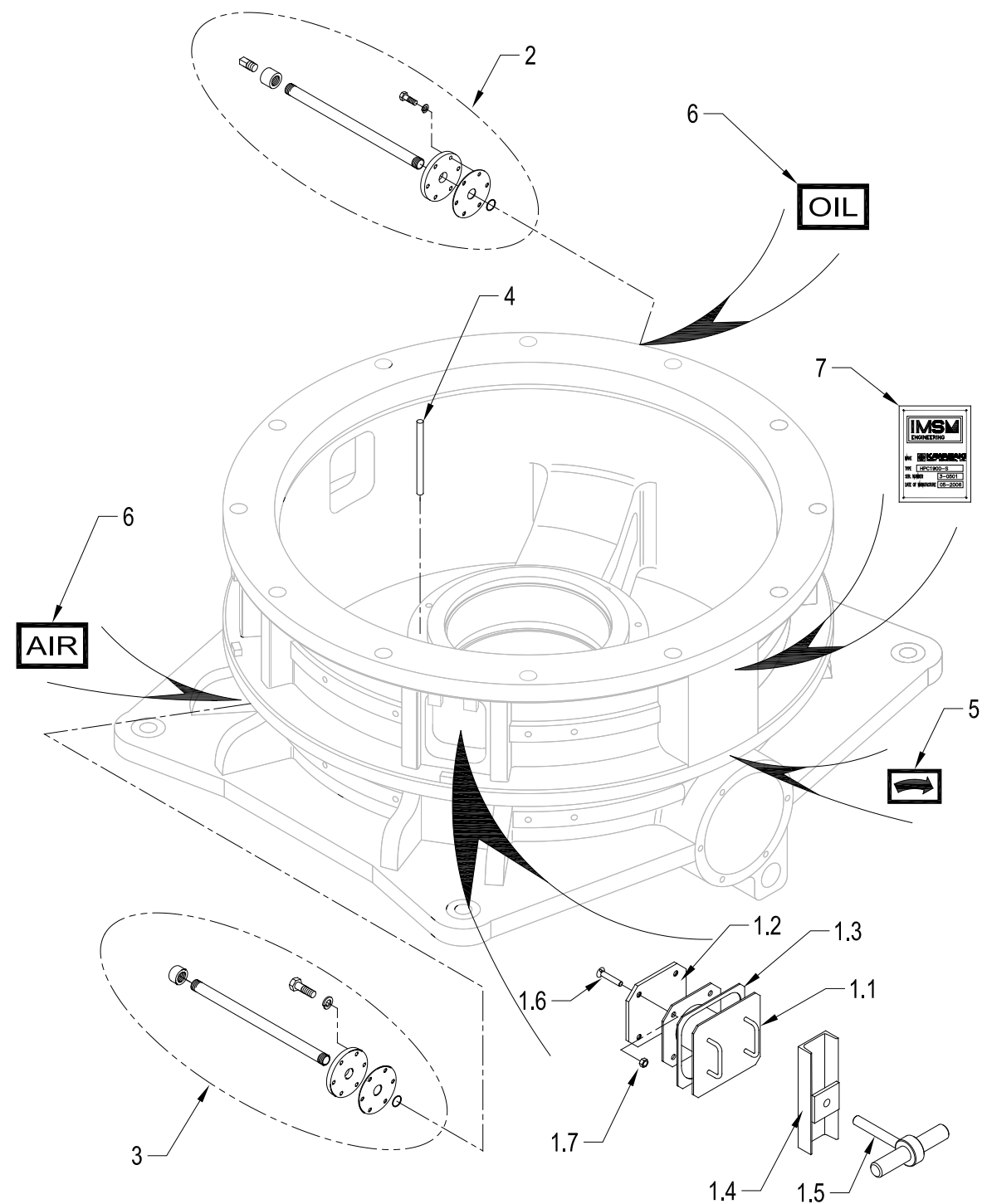
Ref: C/BFM-3/13

# PRIMARY COMPONENTS OF CRUSHING SYSTEM

## 3.1.3 BOTTOM FRAME 3-4\_(ECCENTRIC SLEEVE)

ITEM No	PART DESCRIPTION	PART No	QTY	NOTE
1	ECCENTRIC SLEEVE	Z15-00603-ECC-00	1	CONFIRM THROW PRIOR TO ORDERING
2	SPECIAL KEY	Z15-00607-000-00	1	
3	KEY FOR GEAR	Z15-00605-000-01	1	
4	SPRING WASHER,A16,DIN127	Z02-00020-009-01	1	
5	HXSK CPSCRW,DIN912,M16X40-12,9	A00-02119-009-04	1	
6	BALANCE WEIGHT SET	Z15-00176-000-00	1	
7	INNER BUSHING	Z15-00609-000-01	1	
8	HEX HD BOLT DIN931 M20x40-8.8	Y03-00178-009-11	4	
9				
10	BEVEL GEAR & PINION	Z15-00604-000-00	1	SHALL BE SUPPLIED AS A MATCHED PAIR

# PRIMARY COMPONENTS OF CRUSHING SYSTEM



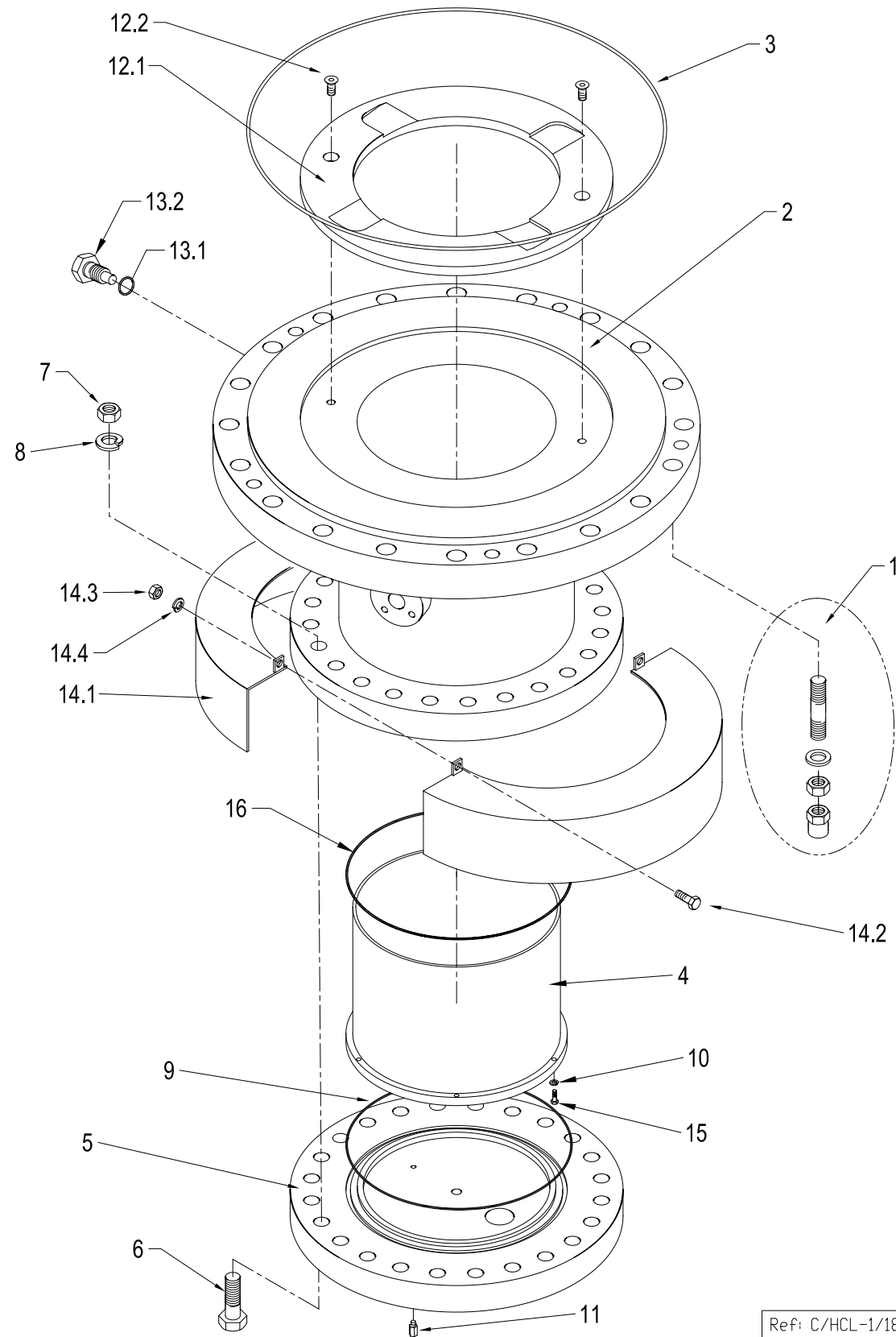
Ref: C/BFM-4/18

# PRIMARY COMPONENTS OF CRUSHING SYSTEM

## 3.1.4 BOTTOM FRAME 3-4\_(PIPING AND DOORS)

ITEM No	PART DESCRIPTION	PART No	QTY	NOTE
1	DOOR, BOTTOM FRAME, 1200Z	Z05-00075-000-00	3	
1.1	DOOR FRAME, BOTTOM FRAME	Z05-00075-000-01	1	
1.2	DOOR LINER, BOTTOM FRAME	Z05-00075-LIN-01	1	
1.3	PACKING, BOTTOM FRMAE DOOR	Z05-00075-000-03	1	
1.4	STIFFNER, BOTTOM FRAME DOOR	Z05-00075-000-04	1	
1.5	T-HANDLE, BOTTOM FRAME DOOR	Z05-00075-000-05	1	
1.6	CSK NIB BLT DIN604 M16x40-8.8	Z02-00271-009-01	4	
1.7	HEX NUT,DIN934,M16-8	V00-00080-009-01	4	
1.8	SPRING WASHER,A16,DIN127	Z02-00020-009-01	4	
2	DUST SEAL AIR PIPE ASSY 1200Zi	Z15-00618-004-00	1	
2.1	SUPPLY PIPE 1Bx568LxSch80	Z15-00622-000-01	1	
2.2	FLANGE, AIR DUST SEAL	Z05-00080-000-03	1	
2.3	DUST SEAL PIPE END CAP 1"	Z05-00081-SOK-01	1	
2.4	HEX HD SCREW,DIN933,M16x45-8,8	A00-06154-009-01	4	
2.5	SPRING WASHER,A16,DIN127	Z02-00020-009-01	4	
2.6	O-RING 34 x 3mm	Z01-00163-SEL-01	1	
2.7	PACKING, DIA165x34.5X3THK	Z05-00082-SEL-01	1	
3	LUBRICATION OIL SUPPLY PIPE	Z15-00617-004-00	1	
3.1	HIGH PRESSURE PIPE 1	Z15-00615-000-01	1	
3.2	FLANGE, OIL SUPPLY	Z15-00529-000-01	1	
3.3	32NB SCREW ON END CAP	Z15-00528-000-01	1	
3.4	PACKING	Z15-00527-000-02	1	
3.5	O-RING 42 X 3.0mm NBR	Z05-00140-009-02	1	
3.6	HEX HD SCREW DIN933 M16x45-8.8	Y02-00147-009-01	4	
3.7	SPRING WASHER A16 DIN127	Z01-00020-009-01	4	
4	HIGH PRESSURE PIPE 2	Z05-00080-000-02	1	
5	RIGHT HAZ ROT DIRECTION PLATE	A00-10263-MIS-01	1	
6	LABELS, AIR/OIL INLET, BF	Z02-00046-004-03	1	
7	IMS / KAWASAKI LABEL 125X155	Z02-00046-004-04	1	

# PRIMARY COMPONENTS OF CRUSHING SYSTEM



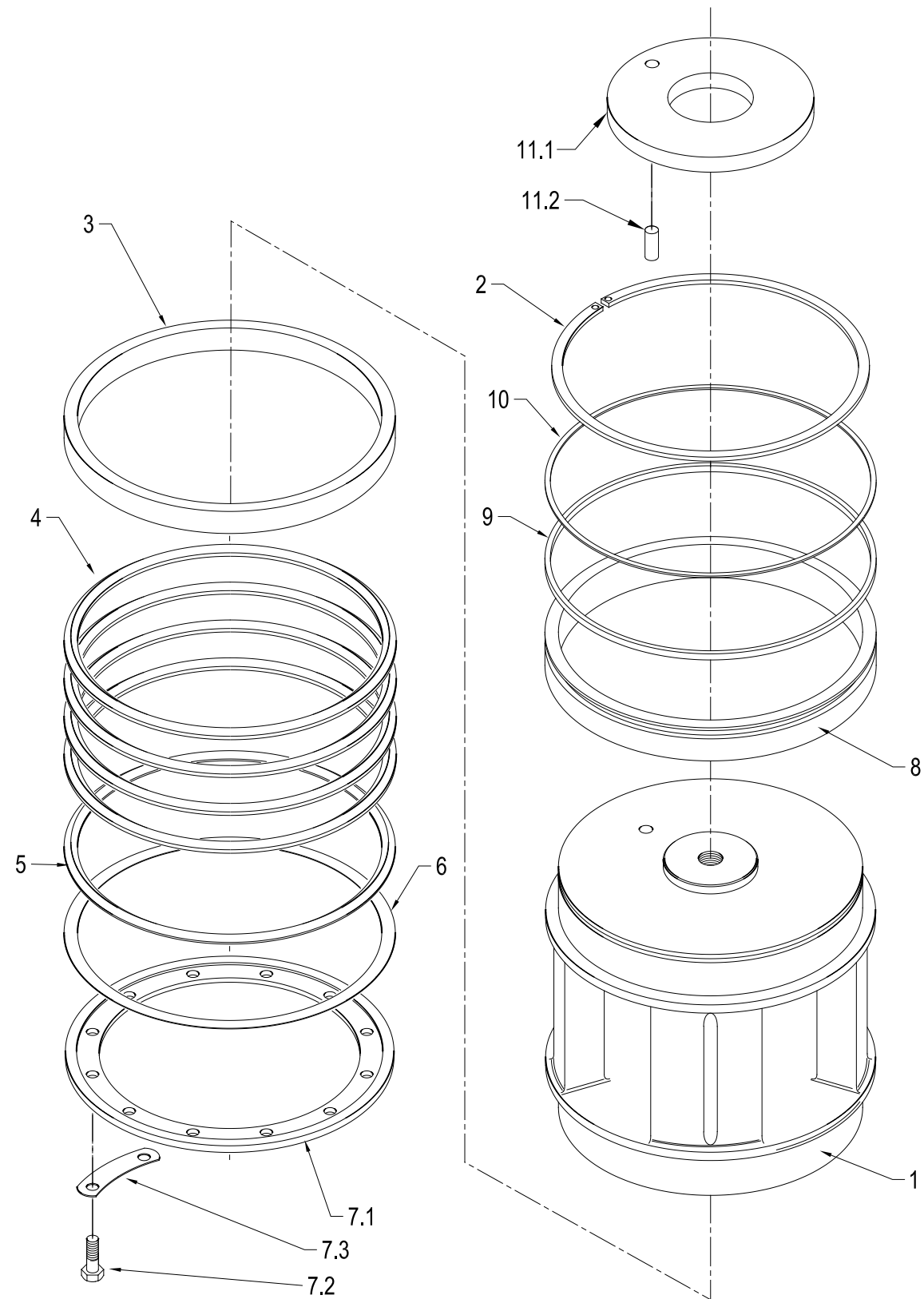
Ref: C/HCL-1/18

# PRIMARY COMPONENTS OF CRUSHING SYSTEM

## 3.1.5 HYDRAULIC CYLINDER 1-3\_(CYLINDER)

ITEM No	PART DESCRIPTION	PART No	QTY	NOTE
1	HYDRAULIC CYLINDER STUD SET	Z15-00316-004-00	20	
1.1	STUD M30X170, BS970 709 M40	Z15-00317-009-01	1	
1.2	CAP AND NUT SET M30X2	Z05-00119-009-02	1	
1.3	HEX NUT,DIN934,M30X2-8	A00-07627-009-01	1	
2	HYDRAULIC CYLINDER 1200Z-i	Z15-00301-HYD-01	1	
3	O-RING 834X8.4	Z05-00100-SEL-01	1	
4	CYLINDER SLEEVE	Z15-00307-000-01	1	
5	BOTTOM PLATE	Z15-00303-PLT-01	1	
6	HEX HD BLT, DIN931 M30x3px150	Z15-00324-009-01	20	
7	HEX NUT, DIN 934 M30x3p	Z15-00325-009-01	20	
8	SPRING WASHER,A30,DIN127	A01-00136-009-01	20	
9	O-RING 498 I.D x 8.4	Z15-00320-SEL-01	1	
10	SPRING WASH, A12 DIN127,HDG	A01-00028-009-01	8	
11	AIR BLEEDER 1/4" - BSPT	Z02-00107-004-01	1	
12.1	CSK CP SCR,DIN7991,M16x35-10,9	A00-07263-009-01	2	
12.2	THRUST BEARING	Z15-00319-BRN-01	1	
13.1	O-RING 55 x 3mm	Z02-00127-SEL-01	1	
13.2	ANTI ROTATION BOLT	Z15-00305-000-01	1	
14.1	COVER	Z15-00306-000-01	2	
14.2	HEX HD SCR, DIN933. M16x35-8.8	Z05-00015-009-01	2	
14.3	HEX NUT,DIN934,M16-8	V00-00080-009-01	2	
14.4	SPRING WASHER,A16,DIN127	Z02-00020-009-01	2	
14.5	FLAT WASHER,A17,DIN 125.	Y03-00178-009-22	4	
15	HX SK SCRW DIN7991 M12x25-10.9	V00-00188-009-01	4	
16	O-RING 405.5ID X 3	L01-00029-009-01	1	

# PRIMARY COMPONENTS OF CRUSHING SYSTEM



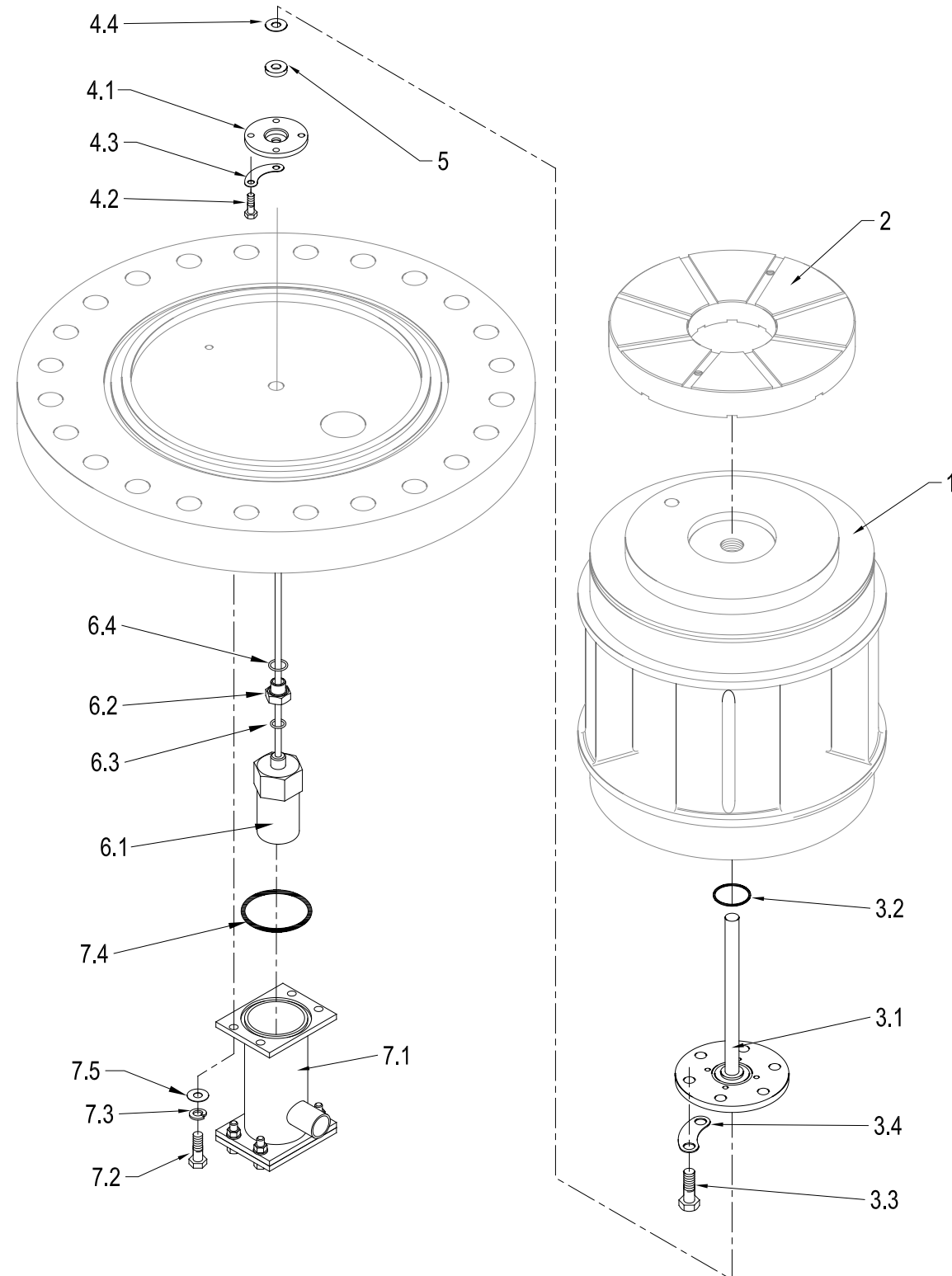
Ref: C/HCL-2/09

# PRIMARY COMPONENTS OF CRUSHING SYSTEM

## 3.1.6 HYDRAULIC CYLINDER 2-3\_(RAM)

ITEM No	PART DESCRIPTION	PART No	QTY	NOTE
1	RAM	Z15-00302-000-01	1	
2	CIRCLIP DIN471, DIA350 x 6	Z02-00102-009-01	1	
3	CONCAVE ADAPTER	Z05-00113-000-01	1	
4	V-PACKING, 1200Z	Z05-00106-SEL-01	1	
5	CONVEX ADAPTER	Z05-00112-000-01	1	
6	SHIM, 1200Z CYLINDER	Z05-00120-000-01	1	
7.1	CLAMP V-PACKING SET 1200Z	Z05-00117-000-00	1	
7.2	HEX HD SCREW DIN933 M16x30-8.8	Y02-00180-009-01	14	
7.3	PLATE 1.6mm	Z05-00118-000-01	4	
8	SCRAPER HOLDER	Z15-00308-000-01	1	
9	SCRAPER, 1200Z RAM	Z05-00116-000-01	1	
10	BACK-UP RING 1200Z	Z05-00115-000-01	1	
11.1	PLAIN BEARING	Z15-00304-BRN-01	1	
11.2	PARALLEL PIN	Z15-00321-PIN-01	1	

# PRIMARY COMPONENTS OF CRUSHING SYSTEM



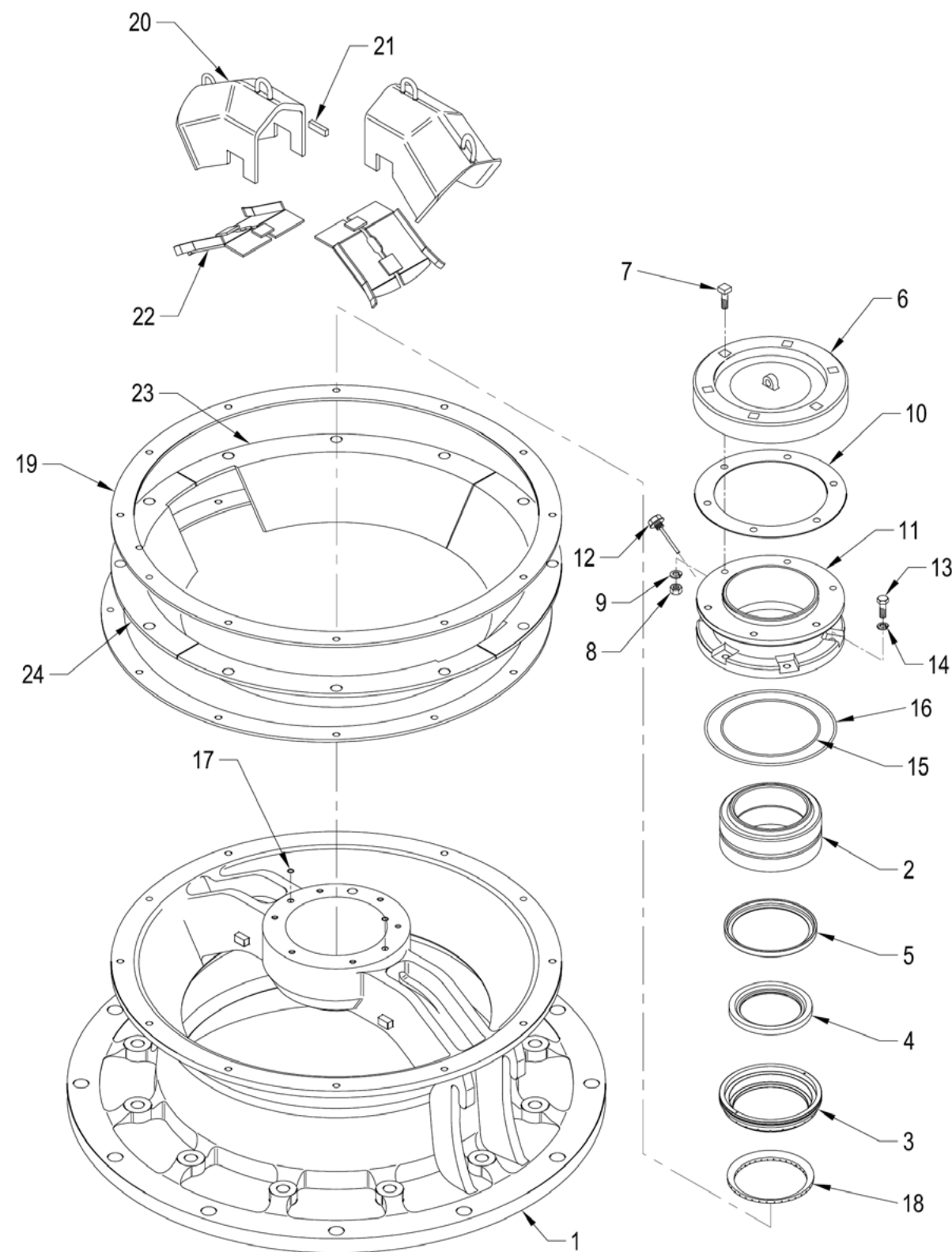
Ref: C/HCL-3/16

# PRIMARY COMPONENTS OF CRUSHING SYSTEM

## 3.1.7 HYDRAULIC CYLINDER 3-3\_(GY FITTINGS)

ITEM No	PART DESCRIPTION	PART No	QTY	NOTE
1	RAM ASSEMBLY			
2	STEP BEARING			
3.1	SHEATH	Z15-00318-005-01	1	
3.2	O-RING G75 ID 75x3.1	Z15-00127-SEL-01	1	
3.4	PLATE, LOCK	Z02-00128-000-01	3	
4.1	MAGNET HOLDER	Y03-00069-000-01	1	
4.2	HEX HD SCRW,DIN933,M8x16-8,8	A00-07078-009-01	4	
4.3	TAB WASHER M10, DIN93,SINGLE T	Y03-00071-009-01	2	
4.4	SPACER,OD=34,ID=14,T=0.8,TEFLO	Z02-00100-004-01	1	
5	MAGNET, GY SENSOR	Z02-00326-000-01	1	
6	GY SENSOR, 1200i, WITH ADAPTOR	Z15-00814-SEN-01	1	
6.1	GY PROBE TEMPSONIC SERIES 111	Z15-00150-SEN-02	1	
6.2	SPACER FOR GY SENSOR 1500Z	Z02-00325-SEN-03	1	
6.3	O-RING 22 x 3mm NBR	Z04-00022-000-02	1	
6.4	O-RING 28 x 3mm NBR	Z02-00120-SEL-01	1	
7	GY SENSOR COVER ASSEMBLY	Z15-00810-004-00	1	
7.1	GY SENSOR COVER	Z15-00811-005-01	1	
7.2	GY SENSOR COVER PLATE	Z15-00812-000-01	1	
7.2	HEX HD SCREW,DIN933,M12x25-8,8	A00-08197-009-01	4	
7.3	HEX HD BOLT DIN931 M12x45-8.8	V00-00302-009-01	4	
7.4	SPRING WASH, A12 DIN127,HDG	A01-00028-009-01	8	
7.4	O-RING ID100 x 3mm NBR	Z02-00326-SEL-04	1	
7.5	HEX NUT,DIN 934,M12-8	A00-06627-009-01	4	
7.5	FLAT WASHER,A13,DIN125-St	A00-06101-009-01	4	
7.6	GY SENSOR COVER GASKET	Z15-00813-000-01	1	

# PRIMARY COMPONENTS OF CRUSHING SYSTEM



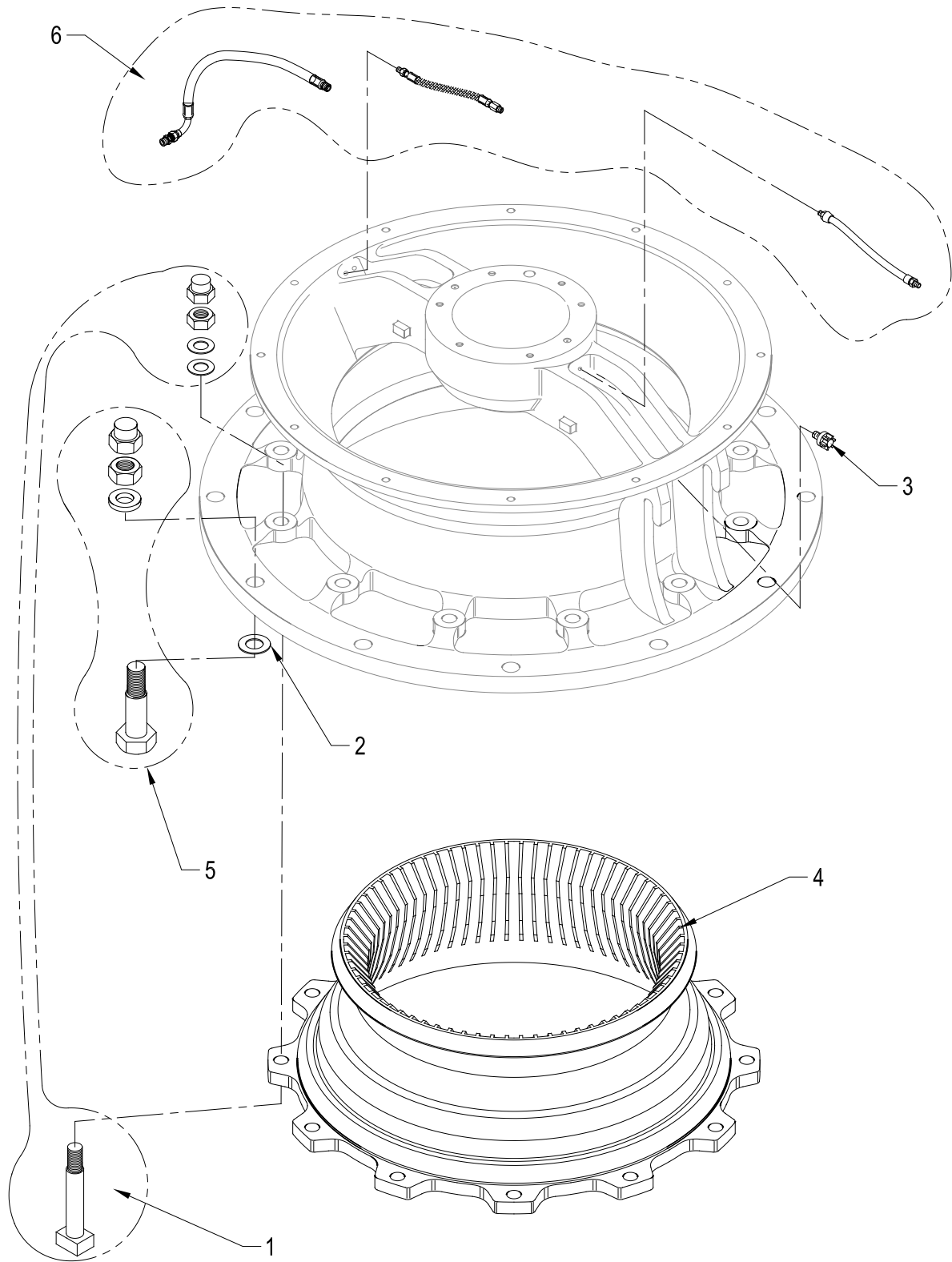
Ref: C/TFM-1/26

# PRIMARY COMPONENTS OF CRUSHING SYSTEM

## 3.1.8 TOP FRAME 1-2\_(BEARINGS AND LINERS)

ITEM No	PART DESCRIPTION	PART No	QTY	NOTE
1	TOP FRAME	Z15-00501-FRM-01	1	
2	SPHERICAL BEARING ASSY 1200Z	Z05-00044-BRN-01	1	
3	OIL SEAL HOLDER	Z15-00519-000-01	1	
4	OIL SEAL SBY 255X300X23	Z05-00042-SEL-01	1	
5	OIL SEAL RETAINING RING	Z15-00519-000-02	1	
6	CAP COVER	Z15-00507-000-01	1	
7	SQUARE HEAD BOLT	Z15-00520-000-01	6	
8	HEX NUT, DIN934, M20-8	Z01-00010-009-01	6	
9	SPRING WASHER, A20, DIN127	Z01-00011-009-01	6	
10	GASKET	Z15-00508-SEL-01	1	
11	CAP	Z15-00510-000-01	1	
12	GREASE, GAUGE	Z02-00143-LUB-01	1	
13	HEX HD SCREW DIN933 M20X55-8.8	Z04-00075-009-01	6	
14	SPRING WASHER, A20, DIN127	Z01-00011-009-01	6	
15	O-RING DIA5.7x362ID	Z15-00515-SEL-01	1	
16	O-RING ID 480xDia5.7	Z15-00522-SEL-01	1	
17	O-RING ø5 x 20 ID	Z02-00754-009-01	2	
18	SCRAPER	Z15-10526-000-01	1	
19	GASKET	Z15-00820-SEL-01	2	
20	TOP FRAME ARM LINER	Z15-00503-LIN-01	2	
21	PIECE	Z15-00517-000-01	4	
22	UNDER ARM LINER	Z15-00504-LIN-02	2	
23	TOP FRAME RIM LINER 1	Z15-00516-LIN-01	2	
24	TOP FRAME RIM LINER 2	Z15-00512-LIN-01	2	

# PRIMARY COMPONENTS OF CRUSHING SYSTEM



Ref: C/TFM-2/23

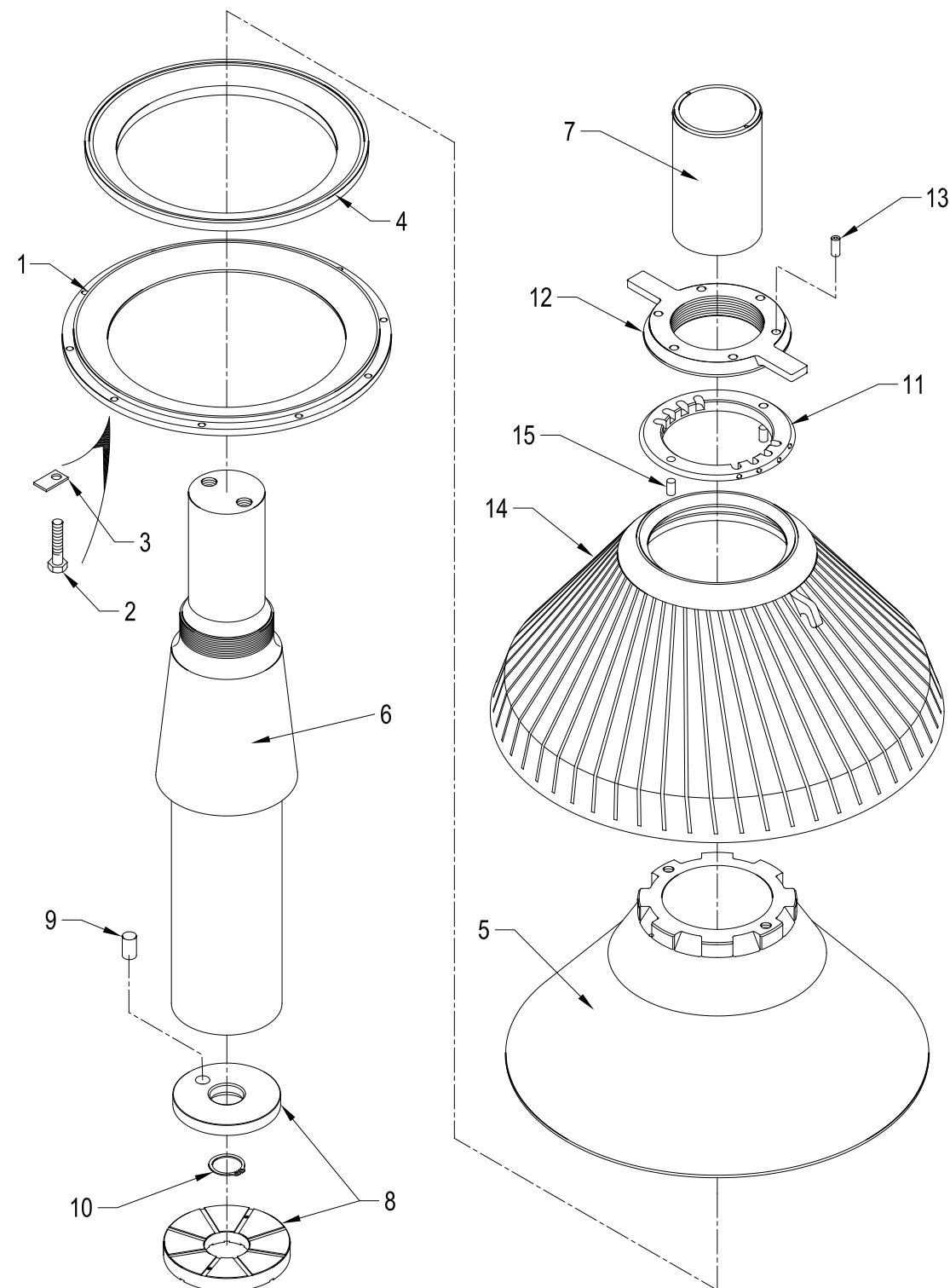
# PRIMARY COMPONENTS OF CRUSHING SYSTEM

## 3.1.9 TOP FRAME 2-2\_(PIPING)

ITEM No	PART DESCRIPTION	PART No	QTY	NOTE
1	BOLT, CONCAVE SET,M36x3x300	Z05-00049-000-00	12	
1.1	BOLT, CONCAVE M36 T-HEAD	Z05-00050-000-01	1	
1.2	NUT, CAP M36X3	Z05-00053-009-01	1	
1.3	NUT, M36X3, CONCAVE	Z05-00051-009-01	1	
1.4	WASHER, BEVEL, OD-80, ID41	Z05-00052-009-01	2	
2	SPACER	Z05-00058-000-01	12	
3	BREATHER BSPT-1/4	Y02-00007-009-01	1	
4	CONCAVE, KC MSI	Z15-00426-CNV-01	1	
5	BOLT, TOP FRAME,HEX-M42x3x220	Z05-00059-000-00	12	
5.1	BOLT, TOP FRAME M42x3x220	Z05-00059-009-01	1	
5.2	HEX NUT,DIN934,M42x3	G05-00192-009-04	1	
5.3	CAP COVER M42X3	Z01-00177-000-02	1	
5.4	FLAT WASHER A43 DIN 125A-ST	B02-00095-009-03	1	
6	GREASE REPLENISHING HOSE ASSY	Z15-00521-004-00	1	
6.1	HOSE, 1/2",400MM,F(SW),90F(SW)	Z02-00164-009-03	1	
6.2	HIGH PRESSURE NIPPLE (1/2 "BSP	Y02-00175-009-01	3	
6.3	STR ADAPT 12-1/2",10 125 1248	Z02-00889-009-03	4	
6.4	TUBING, CLEAR 12MM, 500 LG	Z02-00911-LUB-01	2	
6.5	END CAP, 1/2" BSP	L01-00044-009-01	1	
6.6	REDUCING BUSH 1/2" x 1/4"	L01-00047-009-01	1	
8	SUPPLY PIPING LABELS	Z02-00046-004-05	1	NOT SHOWN
9	LABEL SCREWS	L00-000346-009-01	16	NOT SHOWN



# PRIMARY COMPONENTS OF CRUSHING SYSTEM



Ref: C/MST-D/10

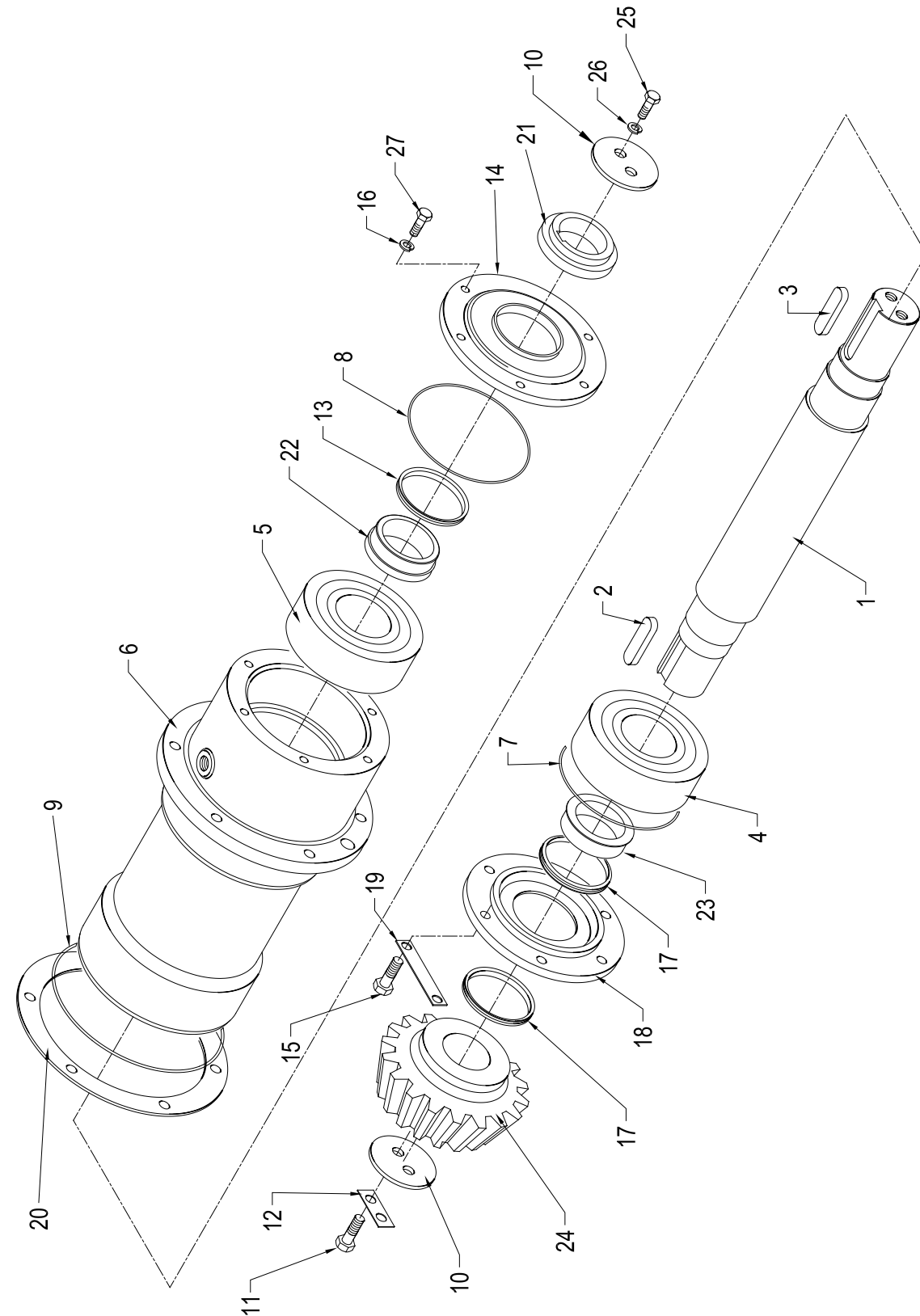
# PRIMARY COMPONENTS OF CRUSHING SYSTEM

## 3.1.10 MAIN SHAFT

ITEM No	PART DESCRIPTION	PART No	QTY	NOTE
1	DUST RING COVER	Z15-00410-005-01	1	
2	HEX HD SCREW DIN933 M16x40-8.8	V06-00266-009-01	10	
3	LOCK PLATE	Z15-00411-PLT-01	10	
4	DUST RING	Z15-00407-RNG-01	1	
5	MANTLE CORE	Z15-00402-MNC-01	1	
6	MAIN SHAFT 1200Z-i	Z15-00401-SHF-01	1	
7	MAIN SHAFT COLLAR	Z15-00408-000-01	1	
8	MAIN SHAFT STEP BEARING SET	Z15-00403-BRN-01	1	
9	KNOCK PIN	Z15-00409-PIN-01	1	
10	CIRCLIP, 1200Z MAIN SHAFT	Z05-00019-009-01	1	
11	TORCH RING	Z15-00404-000-01	1	
12	HEAD NUT	Z15-00415-000-01	1	
13	KNOCK PIN	Z15-00405-PIN-01	2	
14	MANTLE, Specific to customer		1	
15	KNOCK PIN	Z15-00406-PIN-01	2	

**NOTE**  
 WHEN REPLACING THE MANTLE (ITEM 14), THE TORCH RING (ITEM 11 & 15) SHALL BE REPLACED AT THE SAME TIME. ALSO, IT IS HIGHLY RECOMMENDED TO REPLACE THE HEAD NUT (ITEM 12) AT THE SAME TIME.

# PRIMARY COMPONENTS OF CRUSHING SYSTEM



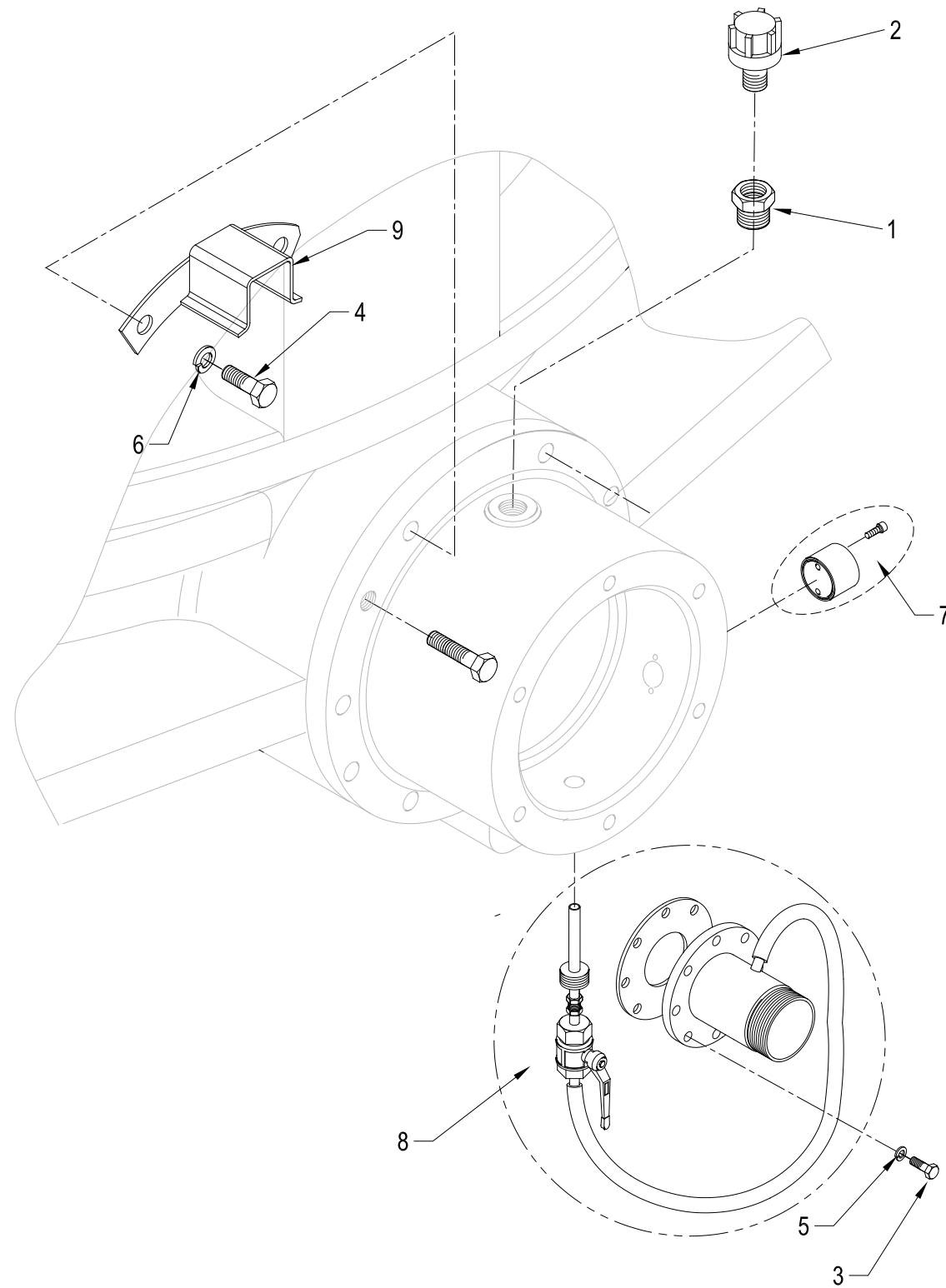
Ref: C/HST-1/13

# PRIMARY COMPONENTS OF CRUSHING SYSTEM

## 3.1.11 HORIZONTAL SHAFT 1-2\_(SHAFT)

ITEM No	PART DESCRIPTION	PART No	QTY	NOTE
1	HORIZONTAL SHAFT	Z15-00702-SHF-01	1	
2	KEY FOR PINION	Z15-00703-000-01	1	
3	KEY FOR COUPLING	Z15-00704-000-01	1	
4	ROLLER BEARING NU2322 C3	Z05-00134-BRN-01	1	
5	SPHERICAL BEARING 22324B C3	Z05-00135-BRN-01	1	
6	SLEEVE HORIZONTAL SHAFT MACHIN	Z05-00136-SLV-01	1	
7	O-RING 240 x 5.7mm	Z05-00137-SEL-01	1	
8	O-RING 260 x 5.7mm	Z05-00139-SEL-01	1	
9	O-RING 334 x 5.7mm	Z05-00138-SEL-01	1	
10	PINION SIDE END PLATE	Z05-00148-000-01	2	
11	HEX HD SCR, DIN933. M16x35-8.8	Z05-00015-009-01	2	
12	PLATE LOCK	Z05-00149-PLT-01	1	
13	V-RING 120S	Z05-00145-SEL-01	1	
14	V-SHEAVE SIDE COVER	Z05-00144-000-01	1	
15	HEX HD SCREW DIN933 M16x40-8.8	V06-00266-009-01	6	
16	SPRING WASHER,A20,DIN127	Z01-00011-009-01	6	
17	V-RING 120S	Z05-00145-SEL-01	2	
18	PINION SIDE COVER	Z05-00142-000-01	1	
19	LOCK PLATE 1.6	L00-00037-000-01	3	
20	PACKING	Z05-00086-000-01	1	
21	HORIZONTAL SHAFT SPACER	Z15-00730-SLV-01	1	
22	PULLEY SIDE COLLAR	Z05-00147-000-01	1	
23	PINION SIDE COLLAR	Z05-00146-000-01	1	
24	PINION			SEE BOTTOM FRAME 3-4
25	HEX HD SCREW DIN933 M16x40-8.8	V06-00266-009-01	2	
26	SPRING WASHER,A16,DIN127	Z02-00020-009-01	2	
27	HEX HD SCREW DIN933 M20x50-8.8	V00-00077-009-01	6	

# PRIMARY COMPONENTS OF CRUSHING SYSTEM



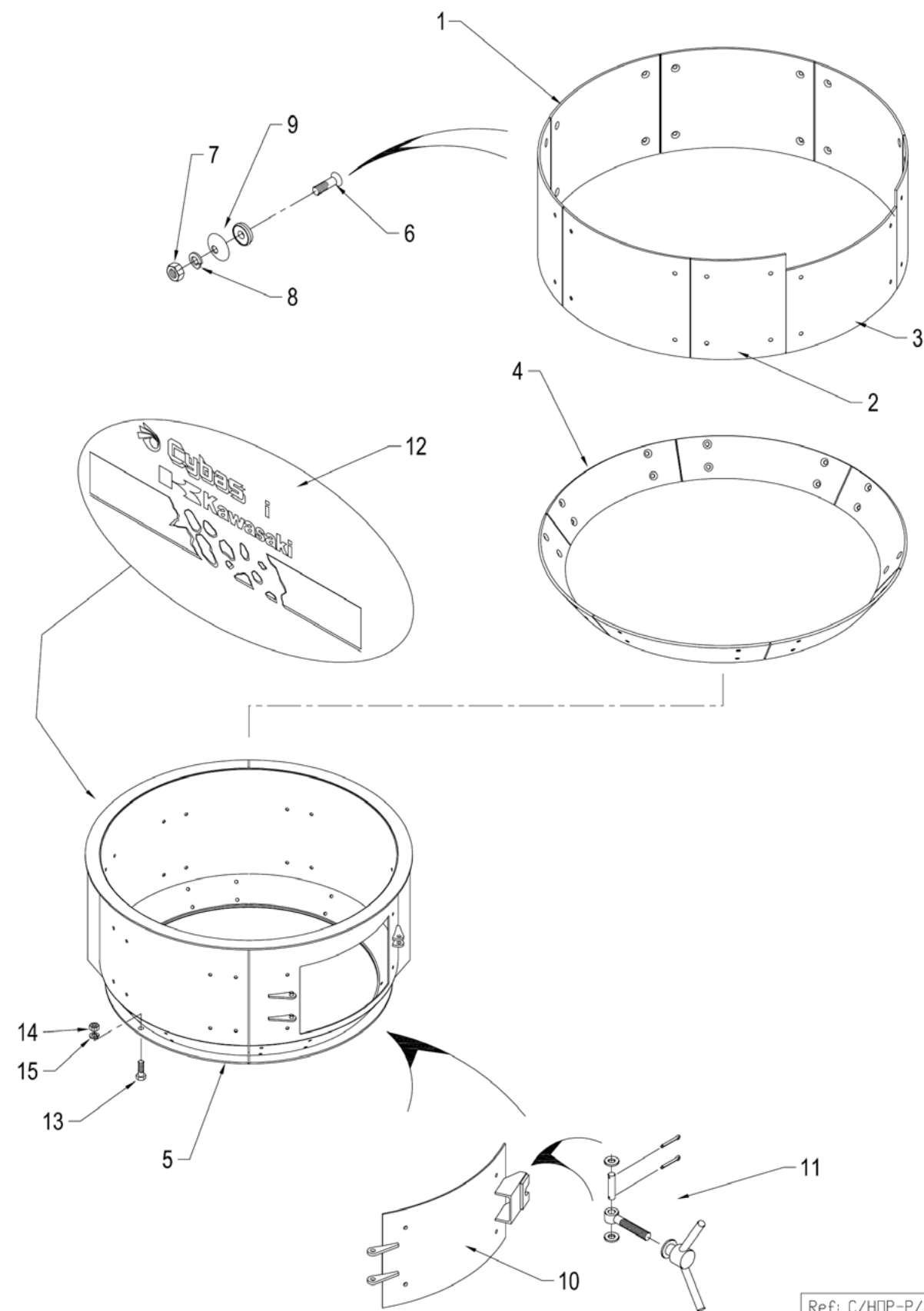
Ref: C/HST-2/13

# PRIMARY COMPONENTS OF CRUSHING SYSTEM

## 3.1.12 HORIZONTAL SHAFT 2-2\_(LUBRICATION)

ITEM No	PART DESCRIPTION	PART No	QTY	NOTE
1	REDUCING BUSH 1Bx1/4BSPT	Y02-00009-009-02	1	
2	BREATHER BSPT-1/4	Y02-00007-009-01	1	
3	HEX HD SCREW,DIN933,M16x45-8,8	A00-06154-009-01	8	
4	HEX HD SCREW,DIN933,M20x60-8,8	A00-06909-009-01	6	
5	SPRING WASHER,A16,DIN127	Z02-00020-009-01	8	
7	OIL POT GAUGE SP-2(Z04-00133-)	Z05-00140-009-01	1	
8	LUBRICATION OVERFLOW HOSE	Z15-00705-000-00	1	
8.1	PIPE 1 WELDMENT	Z15-00707-005-01	1	
8.2	PIPE 2: WELDMENT	Z15-00706-005-01	1	
8.3	1/4" BSPT FULL BORE VALVE	Z15-00708-000-01	1	
8.4	1/4" HEX MALE ADAPTOR D4/44	Z15-00712-000-01	1	
8.5	SOCKET 1/4"	Z15-00709-000-01	1	
8.6	HOSE	Z15-00711-000-01	1	
9	BREATHER COVER	Z15-00710-000-01	1	

# PRIMARY COMPONENTS OF CRUSHING SYSTEM



Ref: C/HOP-P/24

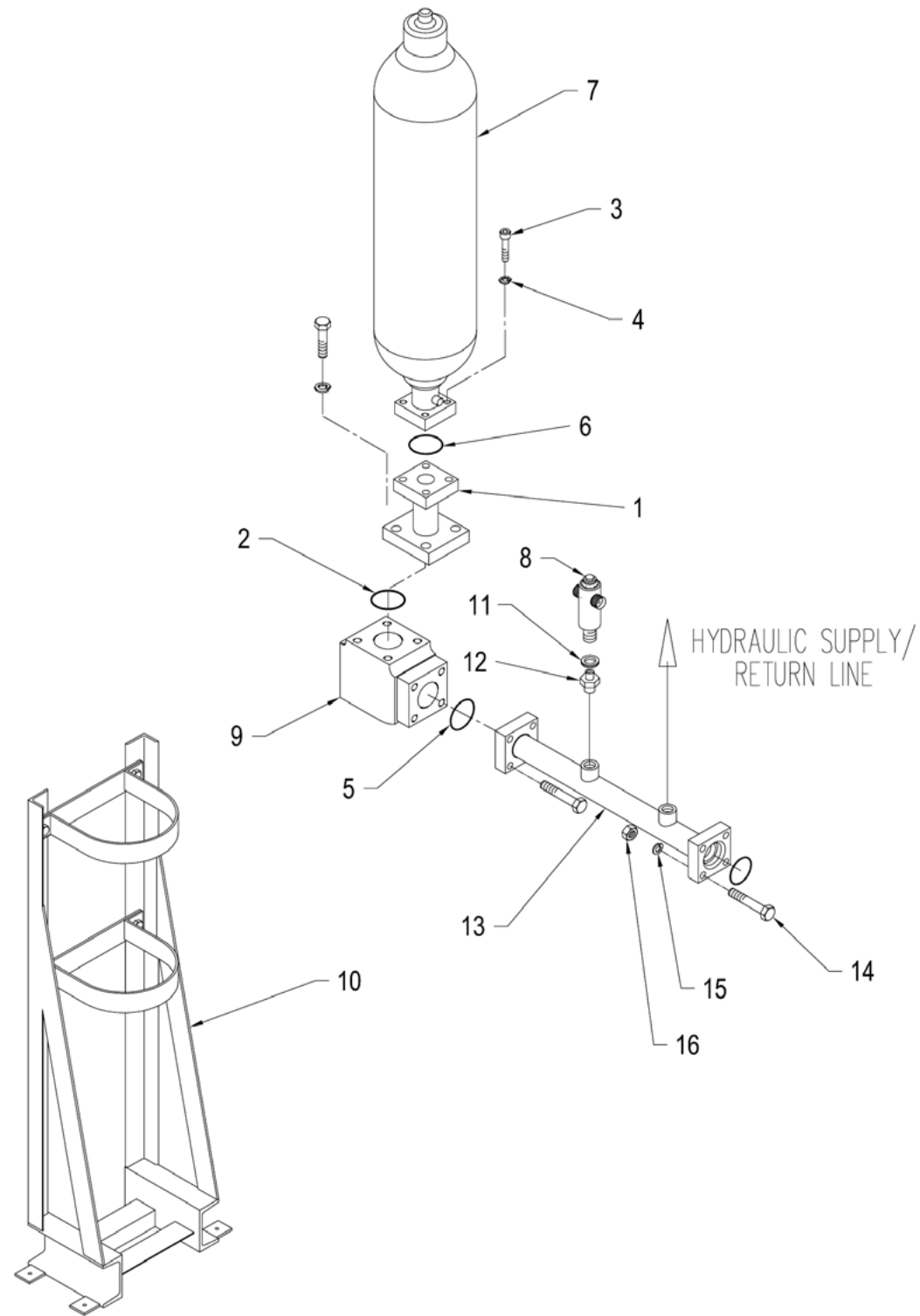
# PRIMARY COMPONENTS OF CRUSHING SYSTEM

## 3.1.13 HOPPER

ITEM No	PART DESCRIPTION	PART No	QTY	NOTE
1	LINER 1, INLET HOPPER	Z05-00063-LIN-01	5	
2	LINER 2, INLET HOPPER	Z05-00063-LIN-02	2	
3	LINER 3, INLET HOPPER	Z05-00063-LIN-03	1	
4	LINER 4, INLET HOPPER	Z05-00063-LIN-04	6	
5	HOPPER 1200Z-i	Z15-00201-005-01	1	
6	CSK NIB BLT DIN604 M16x55-8.8	Z01-00018-009-01	56	
7	HEX NUT, DIN934, M16-8	Z01-00019-009-01	56	
8	SPRING WASHER,A16,DIN127	Z02-00020-009-01	56	
9	45/M16 CAP WASHER +RUBBER SEAL	Z02-00039-009-01	56	
10	DOOR, INLET HOPPER	Z05-00062-000-01	1	
11	LOCK, DOOR, HOPPER	Z02-00120-000-03	1	
11.1	NUT, SPECIAL WING	Z02-00120-004-03	1	
11.2	BOLT DOOR,HOPPER, Special	Z02-00260-000-01	1	
11.3	PIN, STRAIGHT	Z02-00122-009-01	1	
11.4	FLAT WASHER,A21-DIN125-ST	Y03-00155-009-01	2	
11.5	SPLIT PIN 4X40 DIN94	Y02-00126-009-01	2	
12	HOPPER CYBAS-I LABEL	Z12-00000-004-01	1	
13	HEX HD SCRW,DIN933,M20x100-8,8	A00-08303-009-01	12	
14	HEX NUT,DIN934,M20-8	Z01-00010-009-01	12	
15	SPRING WASHER,A20,DIN127	Z01-00011-009-01	12	

**NOTE**  
To mount items 1, 2,3 and 4, four each of items 6, 7, 8 and 9 will be needed per liner.

# PRIMARY COMPONENTS OF CRUSHING SYSTEM



Ref: C/HAC-1/22

# PRIMARY COMPONENTS OF CRUSHING SYSTEM

## 3.2 HYDRAULIC SYSTEM AND ACCUMULATOR

ITEM No	PART DESCRIPTION	PART No	QTY	NOTE
1	ADAPTOR, ACCUMULATOR	Z05-00138-000-01	1	
2	O-RING 84 x 3mm NBR	Z02-00408-009-01	1	
3	HEX HD BLT DIN931 M22x165-8.8	Z02-00479-009-01	4	
4	SPRING WASHER,A22,DIN127	Y02-00005-009-01	4	
5	O-RING ID 75x3mm NRB	Z15-00844-SEL-01	A/R	
6	O-RING ID58x3 NBR	Z02-00858-SEL-01	1	
7	ACCUMULATOR N175-L40, NIPPON	Z02-00467-000-01	1	
7.1	ACCUMULATOR FLANGE	Z02-00467-000-05	-	
8	RELIEF VALVE BOSCH 105BAR	Z03-00037-000-01	1	
9	ANGLE CHECK VALVE HACF 65	Z15-00468-000-01	1	
10	ACCUMILATOR ASSY BRACKET	P01-00208-000-01	1	
11	BONDED WASHER 1/2"	Z12-00477-000-02	1	
12	ADAPTOR, 1" BSPT TO 1/2" BSPP	Z12-00477-000-03	1	
13	ACCUMULATOR PIPE, PLANT 1	Z15-01558-005-01	1	
14	HEX HD BLT DIN931 M20X120-8.8	Z04-00076-009-01	4	
15	SPRING WASHER,A20,DIN127	Z01-00011-009-01	4	
16	HEX NUT,DIN934,M20-8	Z01-00010-009-01	4	



# PRIMARY COMPONENTS OF CRUSHING SYSTEM

---

# PRIMARY COMPONENTS OF CRUSHING SYSTEM

---

### 3.3.1 LUBE CABINET

ITEM No	PART DESCRIPTION	PART No	QTY	NOTE

# PRIMARY COMPONENTS OF CRUSHING SYSTEM

---

# PRIMARY COMPONENTS OF CRUSHING SYSTEM

---

## 3.3.2 HYDRAULIC PUMP

ITEM No	PART DESCRIPTION	PART No	QTY	NOTE



# PRIMARY COMPONENTS OF CRUSHING SYSTEM

---

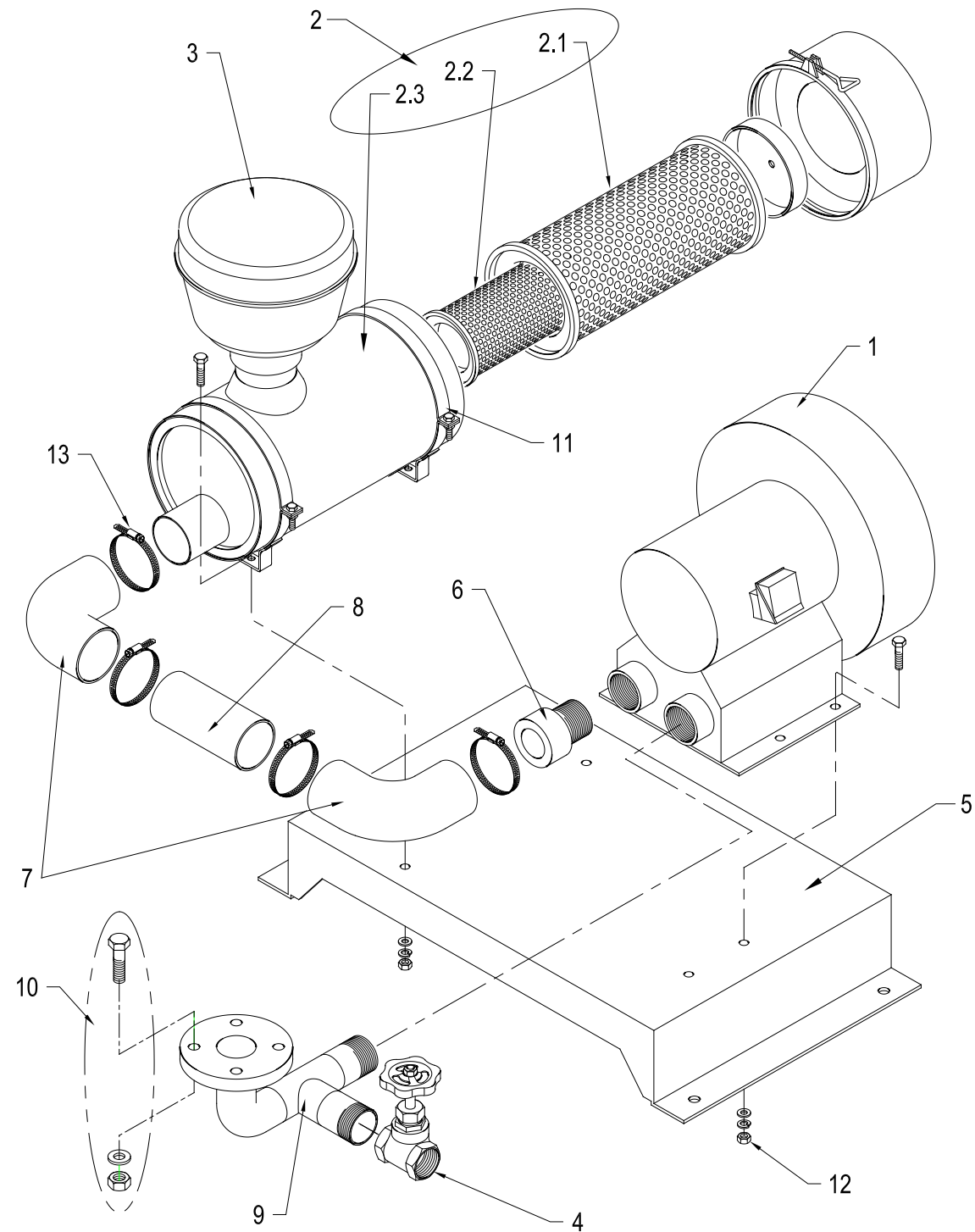
# PRIMARY COMPONENTS OF CRUSHING SYSTEM

---

### 3.3.3 LUBE PUMP

ITEM No	PART DESCRIPTION	PART No	QTY	NOTE

# PRIMARY COMPONENTS OF CRUSHING SYSTEM



Ref: C/ABW-1/06

# PRIMARY COMPONENTS OF CRUSHING SYSTEM

## 3.4 AIR BLOWER

ITEM No	PART DESCRIPTION	PART No	QTY	NOTE
1	AIR BLOWER 380/415V, 0.47kW	Z02-00852-000-00	1	
2	AIR FILTER MOD. FHG06-5189	Z02-00054-009-02	1	
2.1	FILTER ELEMENT SMP18-1052 DONALDSON	Z02-00054-009-18	1	
2.2	SAFETY ELEMENT P12-3160 DONALDSON	Z02-00054-009-19	1	
2.3	AIR FILTER FHG06-5184 WO ELEMENT	Z02-00054-009-20	1	
3	PRE-CLEANER MOD. PBH 00 1249	Z02-00054-009-03	1	
4	GATE VALVE SCR.TYPE 1 1/4" BSP	Z02-00054-009-04	1	
5	BASE, AIR DUST BLOWER	Z02-00054-000-05	1	
6	CONNECTOR, SPECIAL	Z02-00054-000-06	1	
7	RUBBER ELBOW 90deg L/R 57 ID	Z02-00054-009-07	2	
8	PIPE, 50NB SCHED 10 X 130LG GA	Z02-00054-000-08	1	
9	PIPE ADAPTER, BLOWER	Z02-00054-009-21	1	
10	HEX SCR DIN 933,M12x65 SET,HDG	Z02-01420-009-23	4	
11	MOUNTING BAND DIA165 STYLE 'A'	Z02-00054-009-14	2	
12	HEX SCREWM8X25LG C/W NUT	Z02-01420-009-22	8	
13	CLAMP, HOSE DIA 65	Z02-00054-009-17	4	

